



# AV Fistula Needles

SAFETY FIRST AND FOREMOST

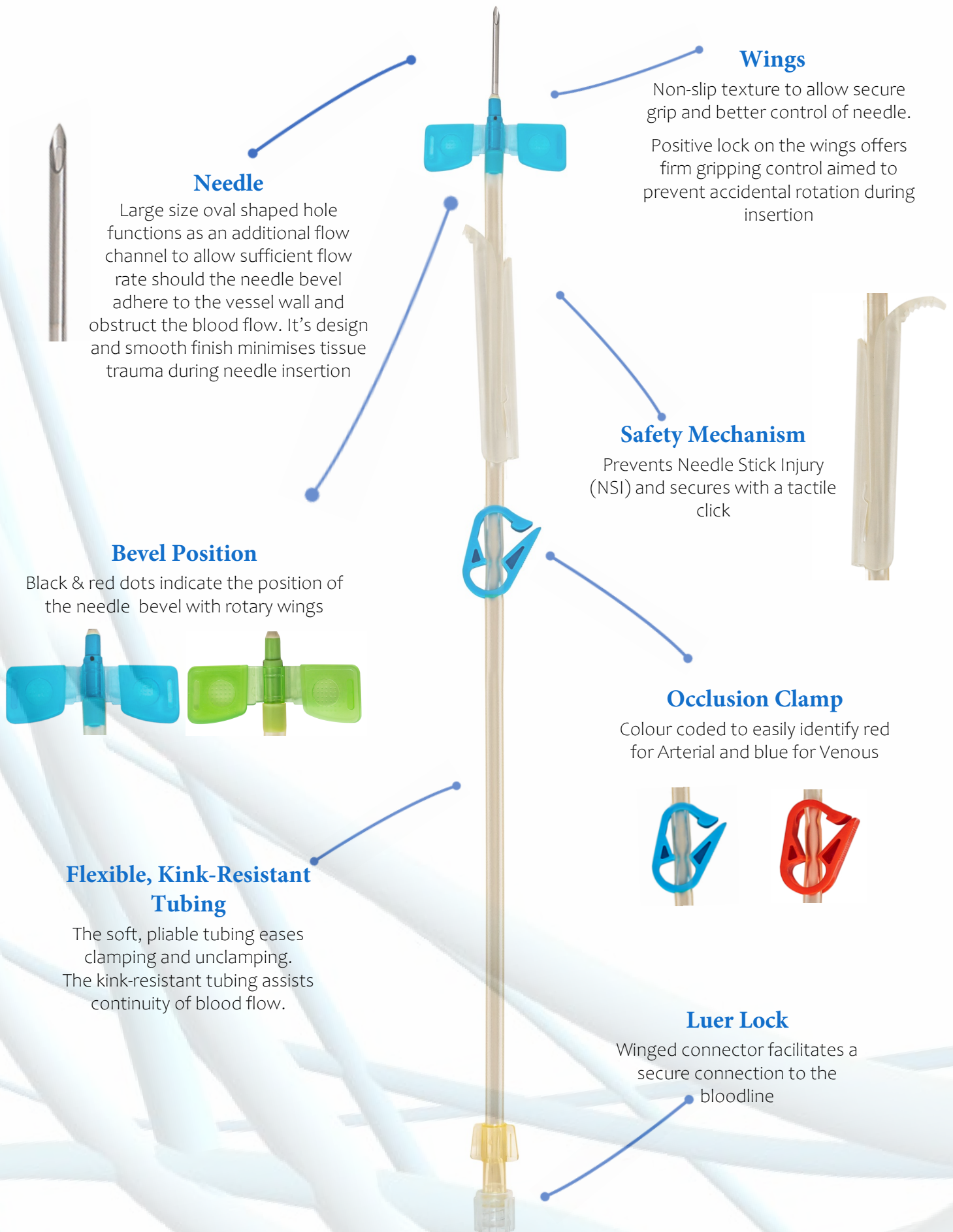
CE  
0197

LundaMed

# Sharp Safety Needles

LundaMed

DESIGNED TO REDUCE THE RISK OF NEEDLE STICK INJURIES (NSI)



# Sharp Safety Needles

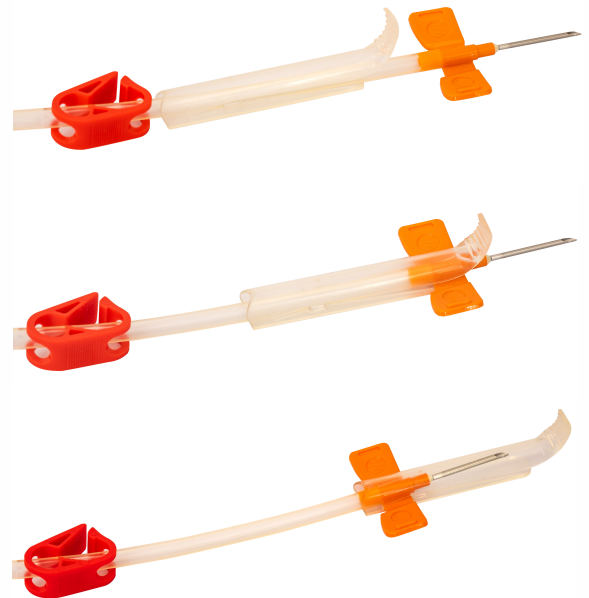
## DESIGNED TO REDUCE THE RISK OF NEEDLE STICK INJURIES (NSI)

- Sharps injuries are a well-known risk in the health and social care sector. Sharps contaminated with an infected patient's blood can transmit more than 20 diseases, including hepatitis B, C and human immunodeficiency virus (HIV). Because of this transmission risk, sharps injuries can cause worry and stress to the many thousands who receive them. <sup>(1)</sup>
- In 2007, the World Health Organisation estimated annual global needle stick injuries at 2 million per year, and another investigation estimated 3.5 million injuries yearly. <sup>(2)</sup>
- Public Health England received report of 8,765 significant exposures in healthcare workers between 1997 and 2018 <sup>(3)</sup>
- In the UK they are most common among nursing staff, with up to 48% reporting having incurred one in their career <sup>(4)</sup>
- When removing the fistula needle from the patients fistula it can be drawn directly into the safety sheath to avoid NSI
- On average, 50.3% (n = 492/978) of all needle stick injuries could have been avoided by the use of safety devices <sup>(5)</sup>

## SAFETY NEEDLE FEATURES & MECHANISM

- Reduced risk of needle stick injury
- Non-reversible mechanism
- Secured locking confirmed by a tactile click
- Available in both rotary and fixed wings
- Upon completion of dialysis, close clamp or hemostat and remove all tapes
- Use fingers to apply gentle pressure with a gauze on the needle puncture site
- Slide finger guard down to pressure holding fingers
- Remove needle from site
- Withdraw the needle completely into the sheath of the finger guard

For safe and proper use of the device please refer to the Instruction For Use



## FIXED & ROTATING SAFETY NEEDLES

Needle Gauge	Wing Colour	Rotating Wings	Clamp Colour	Product Code	Description
15	Blue		Red	AS15G25F	Arterial Safety 15G Fistula Fixed Wings
15	Blue	•	Red	AS15G25R	Arterial Safety 15G Fistula Rotary Wings
15	Blue		Blue	VS15G25F	Venous Safety 15G Fistula Fixed Wings
15	Blue	•	Blue	VS15G25R	Venous Safety 15G Fistula Rotary Wings
16	Green		Red	AS16G25F	Arterial Safety 16G Fistula Fixed Wings
16	Green	•	Red	AS16G25R	Arterial Safety 16G Fistula Rotary Wings
16	Green		Blue	VS16G25F	Venous Safety 16G Fistula Fixed Wings
16	Green	•	Blue	VS16G25R	Venous Safety 16G Fistula Rotary Wings
17	Orange		Red	AS17G25F	Arterial Safety 17G Fistula Fixed Wings
17	Orange	•	Red	AS17G25R	Arterial Safety 17G Fistula Rotary Wings
17	Orange		Blue	VS17G25F	Venous Safety 17G Fistula Fixed Wings
17	Orange	•	Blue	VS17G25R	Venous Safety 17G Fistula Rotary Wings

(1) <https://www.hse.gov.uk/healthservices/needlesticks/index.htm>

(2) [https://en.wikipedia.org/wiki/Needlestick\\_injury](https://en.wikipedia.org/wiki/Needlestick_injury)

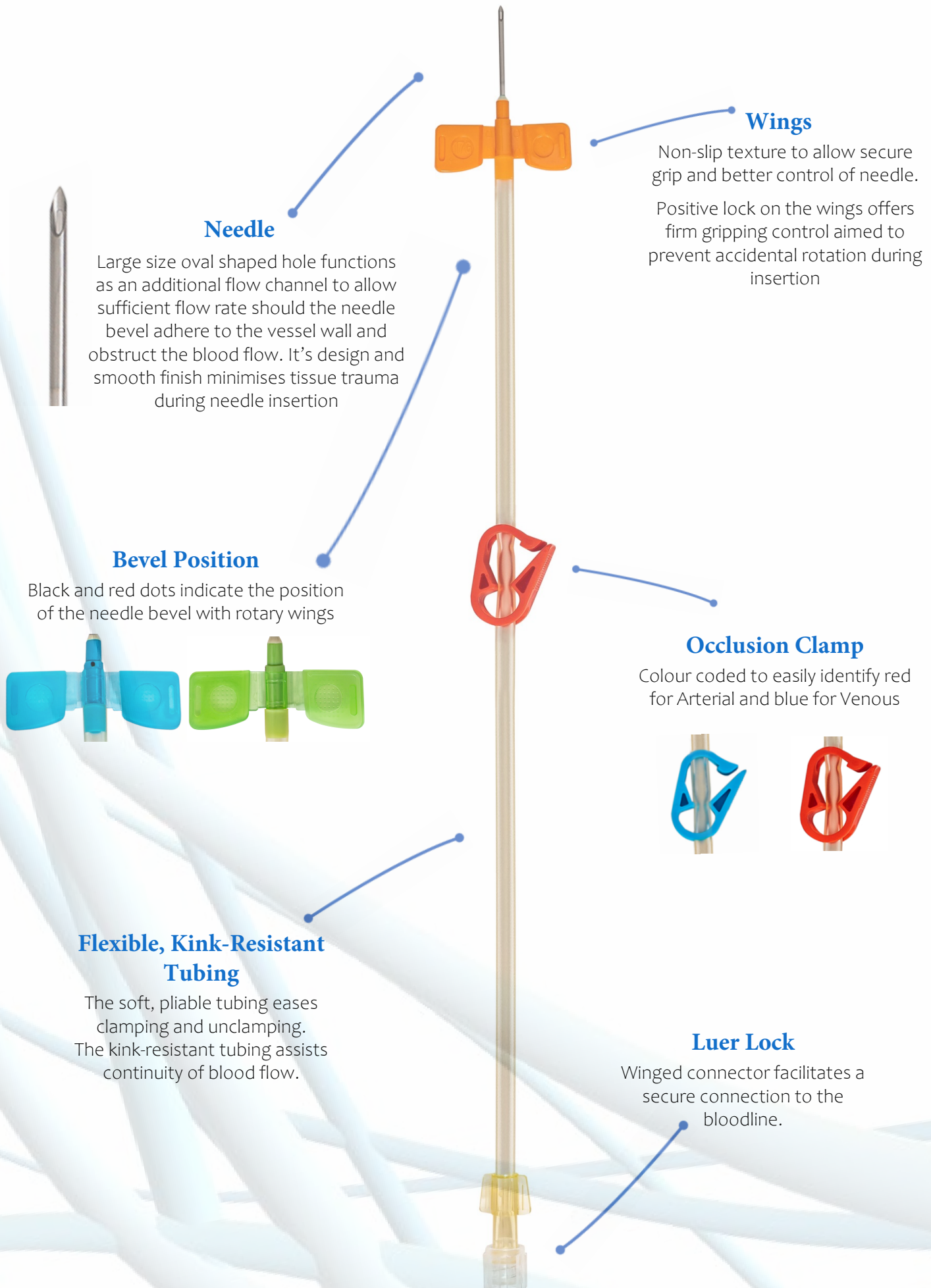
(3) Public Health England. Eye of the Needle Report. 2020

(4) Royal College of Nursing. Needlestick injury in 2008: results from a survey of RCN members. 2008

(5) Needlestick injuries among health care workers: Occupational hazard or avoidable hazard? Wicker S. et al. Wien Klin Wochenschr. 2008; 120(15): 486–492



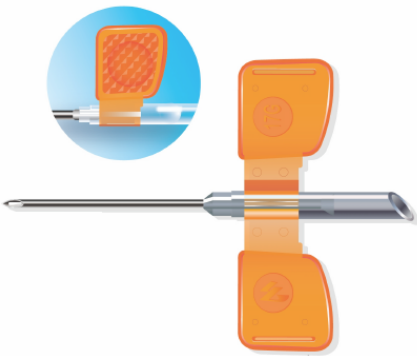
# Standard Needles



# Standard Needles

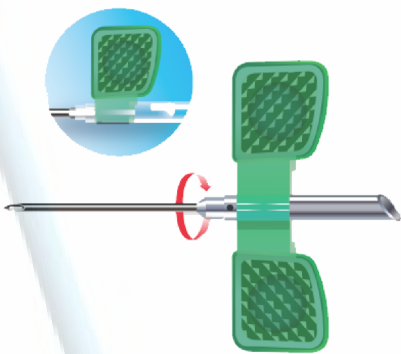
## FIXED WING NEEDLE

- Non-slip texture to allow a secure grip and a better control of the needle
- Silicone coating material designed to reduce pain upon insertion
- Positive lock on the wings offers firm gripping control aimed to prevent accidental rotation during insertion



## ROTATING WING NEEDLE

- Non-slip texture to allow a secure grip and a better control of the needle
- Silicone coating material designed to reduce pain upon insertion
- Positive lock on the wings offers firm gripping control aimed to prevent accidental rotation during insertion
- The needle hub can be rotated or re-oriented without disturbing the wing fixation when it is needed
- The position of needle bevel is indicated by black and red dots on the hub

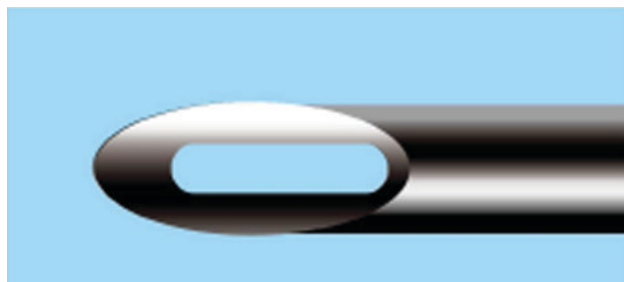


## FIXED & ROTATING STANDARD NEEDLES

Needle Gauge	Wing Colour	Rotating Wings	Clamp Colour	Product Code	Description
15	Blue		Red	A15G25F	Arterial 15G Fistula Fixed Wings
15	Blue	•	Red	A15G25R	Arterial 15G Fistula Rotary Wings
15	Blue		Blue	V15G25F	Venous 15G Fistula Fixed Wings
15	Blue	•	Blue	V15G25R	Venous 15G Fistula Rotary Wings
16	Green		Red	A16G25F	Arterial 16G Fistula Fixed Wings
16	Green	•	Red	A16G25R	Arterial 16G Fistula Rotary Wings
16	Green		Blue	V16G25F	Venous 16G Fistula Fixed Wings
16	Green	•	Blue	V16G25R	Venous 16G Fistula Rotary Wings
17	Orange		Red	A17G25F	Arterial 17G Fistula Fixed Wings
17	Orange	•	Red	A17G25R	Arterial 17G Fistula Rotary Wings
17	Orange		Blue	V17G25F	Venous 17G Fistula Fixed Wings
17	Orange	•	Blue	V17G25R	Venous 17G Fistula Rotary Wings



Large size oval shaped hole functions as an additional flow channel to allow sufficient flow rate should the needle bevel adhere to the vessel wall and obstruct the blood flow. It's design and smooth finish minimises tissue trauma during needle insertion.



Large size oval shaped hole functions as an additional flow channel to allow sufficient flow rate should the needle bevel adhere to the vessel wall and obstruct the blood flow. It's design and smooth finish aims to minimise tissue trauma during needle insertion.

## DULL NEEDLES FOR BUTTONHOLE TECHNIQUE

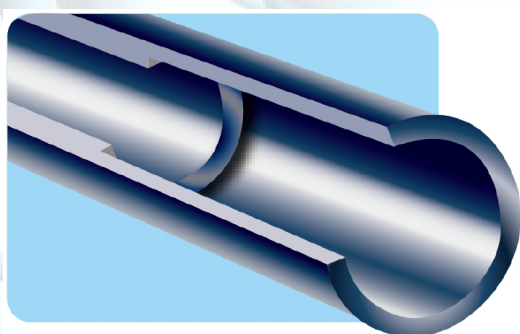
Buttonhole technique is when the needles are inserted in exactly the same place at each dialysis session, creating a collagen track. The initial cannulation is with sharp needles after which blunt needles are routinely used. Both the Renal Association and the National Kidney Foundation recommend the button hole technique.<sup>1,2</sup>

1. Kumwenda M., Mitra S and Reid C. Vascular Access for Haemodialysis 2015
2. KDOQI Clinical Practice Guideline for Haemodialysis Adequacy: 2015 Update. Am J Kidney Dis 2015;66(5):884-930

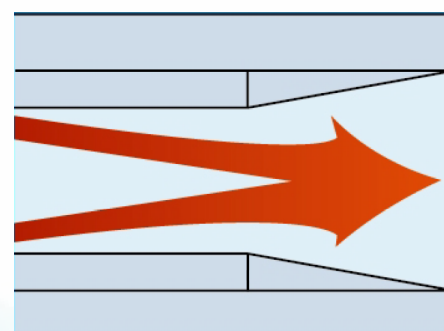
## FIXED & ROTATING DULL NEEDLES

Needle Gauge	Wing Colour	Rotating Wings	Clamp Colour	Product Code	Description
15	Blue		Red	AD15G25F	Arterial Dull 15G Fistula Fixed Wings
15	Blue	•	Red	AD15G25R	Arterial Dull 15G Fistula Rotary Wings
15	Blue		Blue	VD15G25F	Venous Dull 15G Fistula Fixed Wings
15	Blue	•	Blue	VD15G25R	Venous Dull 15G Fistula Rotary Wings
16	Green		Red	AD16G25F	Arterial Dull 16G Fistula Fixed Wings
16	Green	•	Red	AD16G25R	Arterial Dull 16G Fistula Rotary Wings
16	Green		Blue	VD16G25F	Venous Dull 16G Fistula Fixed Wings
16	Green	•	Blue	VD16G25R	Venous Dull 16G Fistula Rotary Wings
17	Orange		Red	AD17G25F	Arterial Dull 17G Fistula Fixed Wings
17	Orange	•	Red	AD17G25R	Arterial Dull 17G Fistula Rotary Wings
17	Orange		Blue	VD17G25F	Venous Dull 17G Fistula Fixed Wings
17	Orange	•	Blue	VD17G25R	Venous Dull 17G Fistula Rotary Wings

## ADDITIONAL INFORMATION



- Thinner wall thickness allows for the utilisation of a smaller gauge needle, or allows a higher blood flow rate with the same gauge needle.
- Careful design of blood flow pathway reduces turbulence.



Tubing Length (mm)	Tubing Volume (mL/min)	Needle Length (mm)	Quantity/Box (units)
300	2.8	25	50

### STERILISED BY GAMMA RADIATION

Patients will be free from the risk of allergic reactions caused by residual ethylene oxide gas.

# LundaMed

# LundaTec

Manufactured by AOHUA Medical for LundaTec



LundaTec AB  
Alfa 3, Scheelevägen 15,  
223 63 Lund, Sweden

LundaTec UK  
12 Commerce Road Lynch Wood  
PE2 6LR Peterborough, United Kingdom



LundaTec UK  
+44 1733 731373



LundaTec UK  
[www.lundatec.co.uk](http://www.lundatec.co.uk)  
[csuk@lundatec.com](mailto:csuk@lundatec.com)